



Sending Service update procedure

Version 1.4

Last update = 16/08/2013

Summary

1	UPDATE PROCEDURE	3
1.1	Warning	3
1.2	Backup the old service	3
1.3	Download the new version	3
1.4	Uncompress the zip file	4
1.5	Stop the Windows Service	4
1.6	Delete the old service	5
1.7	Update	5
1.8	Create the configuration file	5
1.9	Installation of the new Sending Service	5
1.10	Recommandations	6
1.11	Expected communications	6

1 Update procedure

1.1 Warning

To update a Sending Service, the procedure is the same for both the **production** and the **homologation** environment.

The “**homologation/test**” Sending Service use to be installed on the same computer (server) as the “**production**” one but in a different folder.

Following this document, please be very careful about using the right folder according to the kind of update you wish to perform (production or homologation).

1.2 Backup the old service

Before starting this procedure, we strongly recommend to **make a copy** of your actual Sending Service directory.

1.3 Download the new version

Important note

Since 30/07/2012, the new Sending Service is Java 7 compatible.
The new prerequisites are :

- Minimum java version supported = **Java 1.6.0_14**
- **The Java Patch is no more mandatory if Java 6 is used.**
- **The Java Patch must not be applied if Java 7 is used.**

For further information related to the Java patch, please consult our wiki :
http://www.e-file.lu/wiki/index.php/Category_access#Applying_the_java_patch.

On the login page, click the link “**Set-up and downloads**”.

Support

This reference and consultation area gathers together solutions to technical problems that are most commonly encountered by our users and administrators. In order to understand our solutions with some hands-on experience, **interactive video tutorials** are also provided.

○ [Access to the help section](#)

A number of manuals are available to assist you in your reporting.

○ [Consult our user manuals](#)

A download section is also included, which enables you to update your various technical modules.

○ [Set-up and downloads](#)

In the download section click the « [Download the Sending Service](#) » link to download the « SD.zip » file.



Certificates

The SSL certificate used by e-file.lu is issued by [Luxtrust](#).



Sending service

This module allows Finesti users to view, edit, and send regulatory reports in semi-automatic / automatic. Click on the link below to download the sending service. [Download the sending service \(Version of 09/08/2013\)](#)

Info : Please consult the update procedure from our [user manuals](#) section.

This table summarizes the changes that led to the latest versions :

Version	Change
[09-08-2013_145119]	
upgrade	Update of the XSD for reports V12 and update of PDF S2.13 et S1.3 to change the control on the line 1-089
[18-03-2013_140203]	
upgrade	It is now possible to retrieve documents that are to be sent by the SD (KID package ...)
[14-01-2013_080000]	
upgrade	Update of the PDF templates with the new signature
[27-11-2012_135300]	

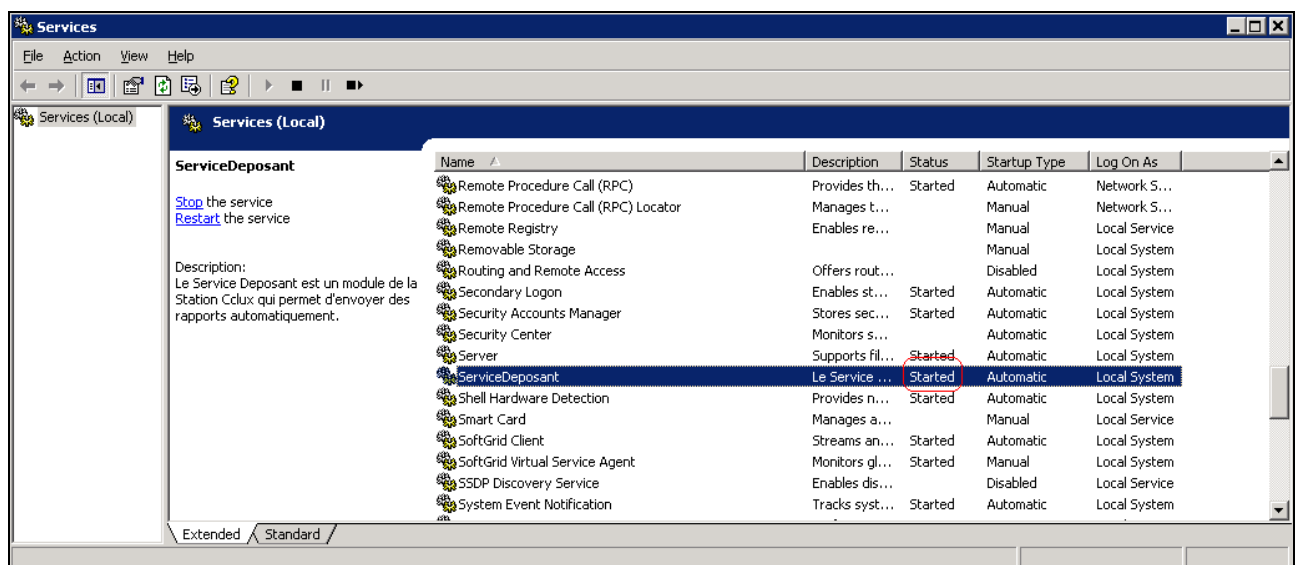
1.4 [Uncompress the zip file](#)

Unzip the zip file content in a folder of your choice (desktop for instance) and not directly in your Sending Service root folder (this is to avoid problems while uncompressing and merging folders at the same time...)

1.5 [Stop the Windows Service](#)

Check the windows service state corresponding to your Sending Service and **stop it if started**.

Note : It is not compulsory to set up the Sending Service as a windows one. It also can be started manually in a « MS-DOS » window. In that case, please just skip this step.



1.6 Delete the old service

The old service being saved in a backup folder (see 1.2), you will still be able to rollback anytime to your current version if needed.

In those conditions, please delete the whole content of your Sending Service main folder (usually C:\ServiceDeposant), except both folders

- **Keystore**, location of your Luxtrust certificate to encrypt data
- **ReportingDiffusion** containing the history of previously sent reports

1.7 Update

You now can **copy the whole content of the new Sending Service** (unzipped in 1.4 section) in your Sending Service folder (cleaned in the previous step).

Note 1 : Replace the content of both folders 'keystore' and 'ReportingDiffusion' when asked.

Note 2 : You may have a file named '**send-tpt-to-finesti.xml**' in the '**config**' folder of your old Sending Service. In this case, it is very important to copy the latter in the updated Sending Service '**config**' folder.

Note 3 : The « **ReportingDiffusion** » subdirectory might be installed on a network drive for various reasons (sharing access with multiple users, facilitate the backup, ...). In that case, you must create new folders by copying the « ReportingDiffusion » directory from the downloaded zip file to your network drive. (**Merging the content**)

1.8 Create the configuration file

Make a copy of « template_configInstall.properties » file and name it xxx.properties (xxx = your entity name).

Open this file with a standard text editor (Notepad) and replace all the « ??? » with appropriate values.

Note : To help you setting up this file, you still can use your old configuration file in the previously copied Sending Service (see step 1.2)

1.9 Installation of the new Sending Service

Open a "DOS" window and go to the root folder of your new Sending Service in order to run this command.

install.bat xxx.properties (replace xxx with the name you chose in the previous step)

You will then be asked to enter the root path of your JRE (example: C:\Program Files\Java\jre1.6.0_07)

At the end of the script you must get a message like this:

```
deleteUselessFiles:
deleteWindowsFiles:
deleteUnixFiles:
BUILD SUCCESSFUL
Total time: 8 seconds
C:\ServiceDeposant>_
```

The actual installation is now completed and The “MS-DOS” window can be closed,.

1.10 Recommandations

After restarting this new Sending Service, we advice you to check the size and content of the « error.log » file :

- An empty file indicates that the service is well started and operational.
- If data are logged in, you may need to open and analyze its content. It is likely a configuration problem with the properties file (you still get "?" or a wrong path was entered for instance).

If the error persists, please provide us with your « error.log », « wrapper.log » and « xxx.properties » files to sdi@bourse.lu. We will be able to help you.

Note: Any change in the properties file must be followed by the Service installation (chapter 1.9)

1.11 Expected communications

Once the installation is achieved, we would appreciate to receive from you the file « RELEASE_README.txt » (our address : sdi@bourse.lu). This latter will allow us to keep our version database up to date.

Please feel free to keep us informed of difficulties you may have encountered following this update procedure.